

692 Military Road MOSMAN, NSW



2



2.5



2

## Run your business from your home

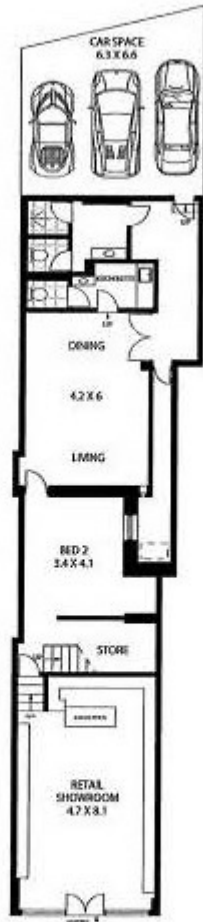
This is not your typical property.

This property has a retail/office component on the ground level with upstairs living and residential areas.

Ideally suited to businesses where you want to also live at the property, this property will best suit the following style of businesses:

- Beautician/Massage
- Boutique Gym/ Pilates/Yoga
- Dentistry
- Optician/health (chiro etc)
- Hairdressing

**Greg Lee**



GROUND FLOOR



TOP FLOOR

APPROX : RESIDENCE AREA > 146 SQM  
APPROX : RETAIL SHOWROOM AREA > 39 SQM



692 MILITARY ROAD

MOSMAN

Floor Plan Directions: All the top level floor plans / site plans are intended as an approximate guide only. No representation or warranty of any kind is given or intended and any person using such information either has at a glance should always verify these plans on site. Med the Gap property marketing services / 1300 133 145 / Photography, Floor plans, Lipperting, Tables, Online, Design / [info@medthegap.com.au](mailto:info@medthegap.com.au)