



30/5 Gillott Way ST IVES, NSW



3



2



2

## COPPINS ? IMMENSELY PROPORTIONED 3 BEDROOM APARTMENT IN THE HEART OF ST IVES

UNDER CONTRACT

**Council Rates:** \$1,372.00/year (approx)

**Water Rates:** \$680.00/year (approx)

**Strata Rates:** \$1,910.00 p/q

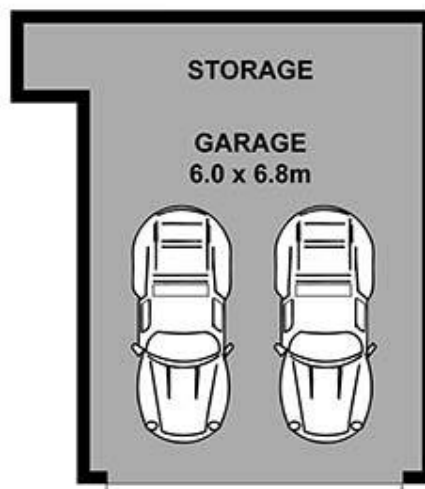
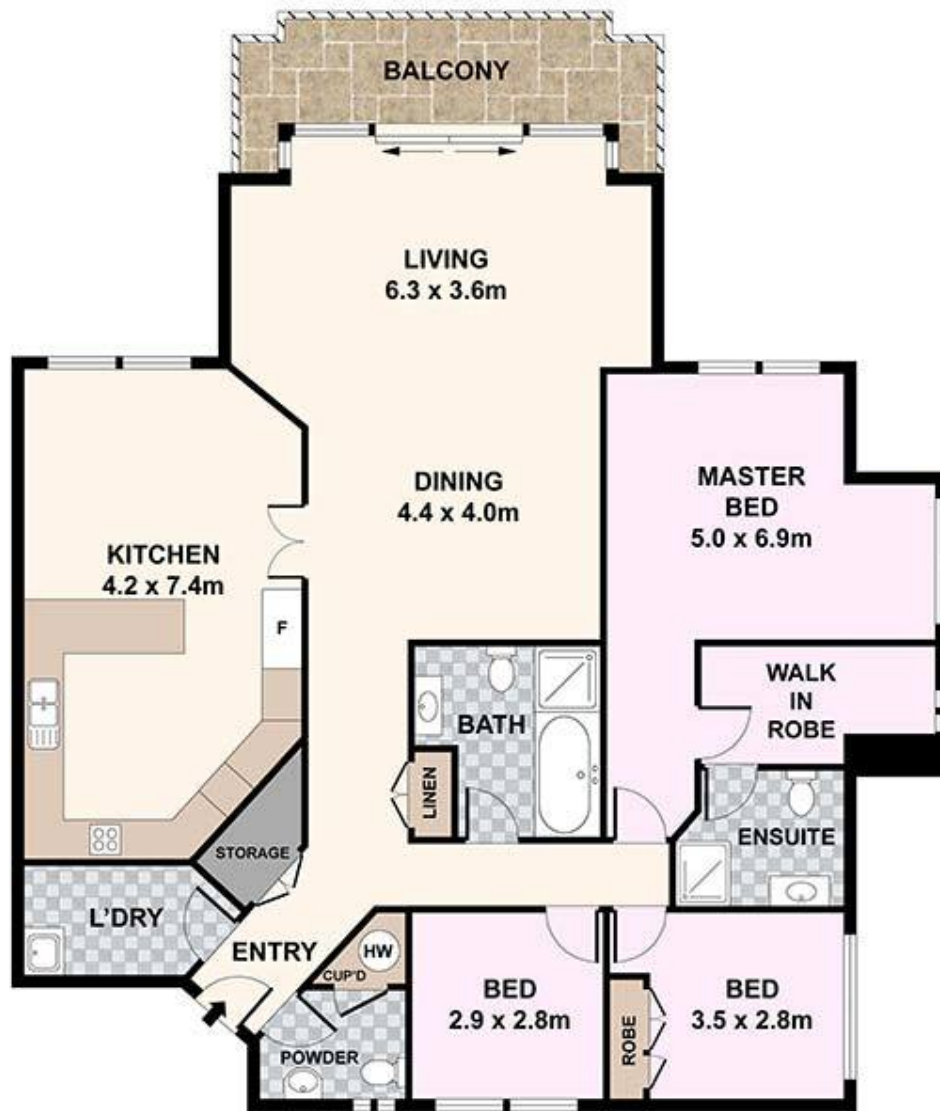
- \* Expansive lounge and dining opening to the large terrace
- \* Family sized gas kitchen boasting a large walk-in pantry
- \* Superb entertaining and relaxing balcony.
- \* Powder room, internal laundry, substantial main bathroom
- \* Three queen-sized bedrooms, master with ensuite and WIR
- \* Double lock up garage and plenty of visitors parking
- \* Levies \$1910 p.q. Water \$680 p.a. Council \$1372 p.a.

**Hilary Lazarus**

0414 442 414

**Yvonne Zheng**

0436 195 888



Scale in metres. Indicative only. Dimensions are approximate. All information contained herein is gathered from sources we believe to be reliable. However, we cannot guarantee its accuracy.

30/5 GILLOTT WAY

ST IVES, NSW

