



11/154-156 Bellevue Road BELLEVUE HILL, NSW



2



1



1

## Spacious, private oasis this is a prize home or investment.

Located in the heart of Bellevue Hill and only a stone's throw to the new fashionable Double Bay Village precinct is this gorgeous bright and airy 2 bedroom unit. Built in 1969, having only ever had one owner this original unit offers lots of potential to renovate and make your own. It is Ideal for a down sizer, young family, or investment property, in blue ribbon location.

**Council Rates:** \$335.00 p/q

**Water Rates:** \$171.00

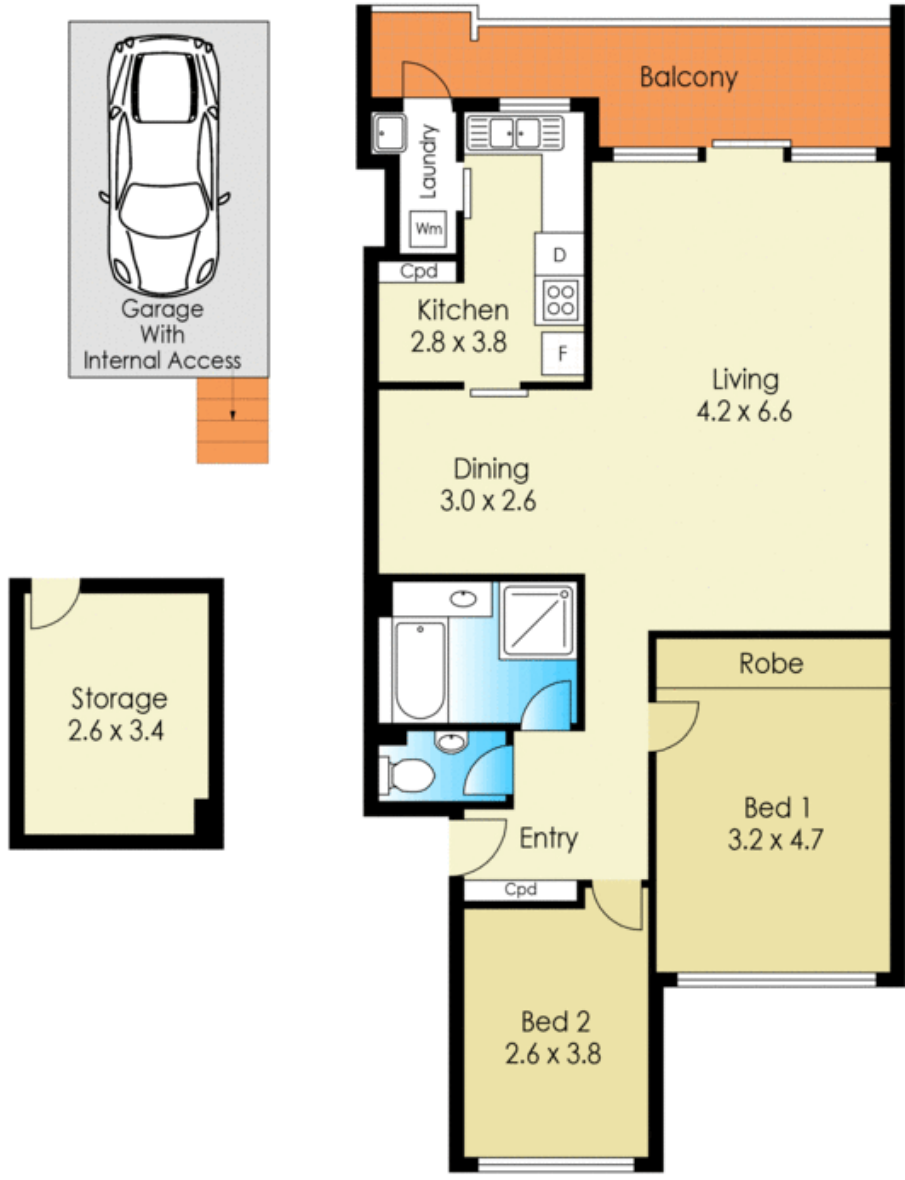
**Strata Rates:** \$760.00 p/q

### Features:

- 2 spacious bedrooms, main with built ins
- It offers lots of potential to renovate.
- Original neat, kitchen and laundry, bathroom with separate toilet.
- Stunning balcony enjoying picturesque views across the leafy valley

**Hilary Lazarus**

0414 442 414



11/154-156 Bellevue Road, Bellevue Hill

\*internal area approx: 88 m<sup>2</sup>

\*Disclaimer : Purple Runner Pty. Ltd. A.B.N. 60 163 607 480  
 Trading as NORTHSIDE FLOORPLANS ROSEVILLE  
 Mob. 0402 073 101 10/15

This floor plan serves only as a guide for promotional purposes and should not be relied upon for any legal or financial purposes to be accepted.

**11/154-156 Bellevue Road**

**BELLEVUE HILL, NSW**