



57 Bourke Street QUEENS PARK, NSW



3



2

## Perfectly positioned and immaculately maintained home

Beyond its picture-perfect façade, this delightful family home is ready to occupy. Set in a gorgeous street it offers a combination of such a wonderful location, with close proximity to Queens Park and Centennial Park as well as the wide range of amenities and transport links at Bondi Junction, Westfield and multiple schools in its surroundings, this is a wonderful lifestyle offering in a desirable locale.

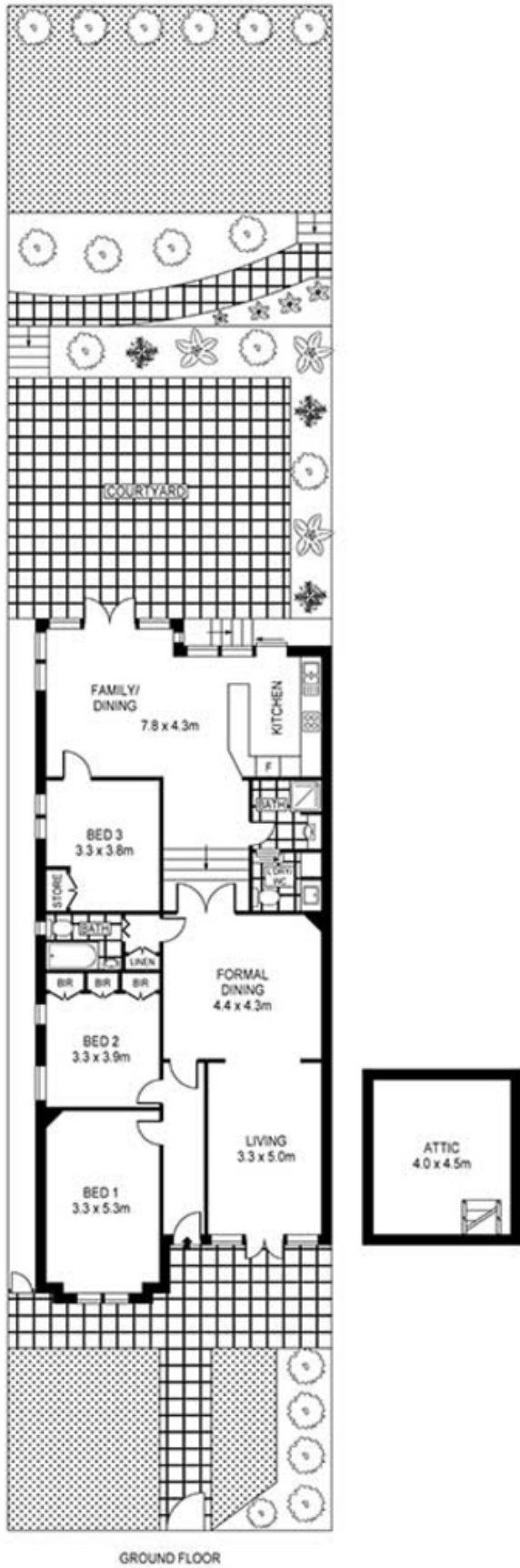
The elevated position in the best street in Queens Park offers open views at the rear of the home which on a clear day can see the Blue Mountains.

It features:

-Double outdoor living; sandstone paved courtyard and grassed garden

**Lindy Klein**

0412 839 300



TOTAL APPROX. FLOOR AREA 161.0 SQ.M.  
 Measurements are approximate. Not to Scale. For illustrative purposes only.  
 Produced by **RENT PRO**

57 Bourke Street

QUEENS PARK, NSW

